

PART OF S.E. 1/4 OF N.E. 1/4  
SECTION 20, T.6N., R.1W., S.L.B. & M.

IN OGDEN CITY  
SCALE 1" = 50'

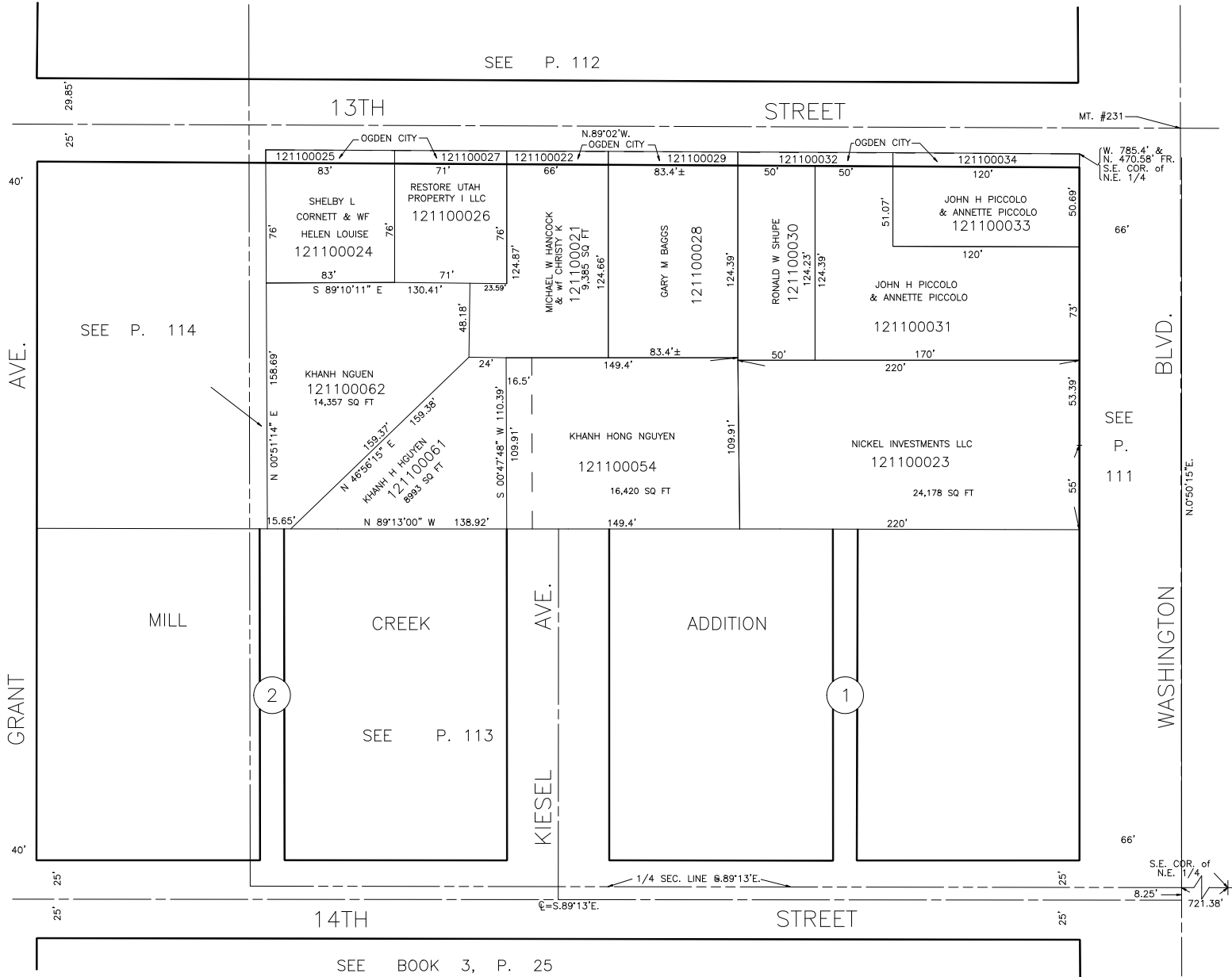
TAXING UNIT: 25

SEE P. 112

13TH STREET

STREET

MT. #231



SEE P. 114

OGDEN CITY

121100025 83' 76' SHELBY L CORNETT & WF HELEN LOUISE 121100024

121100027 71' RESTORE UTAH PROPERTY I LLC 121100026

121100022 66' MICHAEL W HANCOCK & WF CHRISTY K 121100021 9,385 SQ FT

121100029 83.4± GARY M BAGGS 121100028

121100032 50' RONALD W SHUPE 121100030

121100034 120' JOHN H PICCOLO & ANNETTE PICCOLO 121100033

121100031 JOHN H PICCOLO & ANNETTE PICCOLO

121100023 NICKEL INVESTMENTS LLC 121100023 24,178 SQ FT

121100054 KHANH HONG NGUYEN 121100054 16,420 SQ FT

121100062 KHANH NGUEN 121100062 14,357 SQ FT

121100061 KHANH H NGUYEN 121100061 8893 SQ FT

(W. 785.4' & N. 470.58' FR. S.E. COR. of N.E. 1/4

BLVD.

SEE P. 111

N.0°50'15"E.

WASHINGTON

40'

40'

25'

25'

SEE BOOK 3, P. 25